

VACUUM PRESSURE SYSTEMS

ACS Group • Walton/Stout manufactures several types of vacuum/pressure conveying systems to meet your requirements. Pellets and powders can be conveyed long distances at high rates.

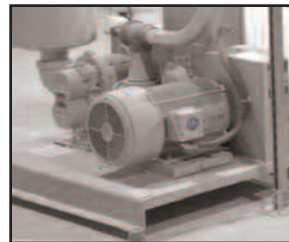
The single motor/blower system delivers approximately equal airflow on the vacuum and pressure sides. For this reason, the motor/blower must be located approximately halfway between the pick-up and delivery points of the system. If locating the assembly at that point is not feasible, or if higher through-puts are required, the dual blower/dual motor system is recommended.

FEATURES

- *Energy-efficient single or dual motor/blower designs*
- *Secondary cartridge filter protects the blower package—removes easily for maintenance*
- *Remote-mount NEMA 12 control panel with electrical disconnect for safety*
- *Rotary level indicator in receiver prevents surging on vacuum side*
- *Mechanical vacuum/pressure relief valves to reduce downtime and maintenance*
- *Air operated vacuum relief valve to purge system and minimize downtime*



A railcar manifold aids the removal of material from the railcar into bulk storage silos.



The heart of the system is a motor/blower assembly with an air-operated vacuum relief valve. The positive displacement blower is protected by a two-stage, high velocity filter assembly.



Material is separated from the airstream by a cyclone or filter receiver. Material drops through a rotary airlock and is conveyed by pressure to a takeoff into a silo.

ACS Group • Walton/Stout is committed to a continuing program of product improvement. Dimensions are subject to change without notice.

© 2009 ACS Group • Walton/Stout

Bulletin WMH3-210

Printed in USA

WST

ACS GROUP • WALTON/STOUT

ACS Group • Walton/Stout
2900 S. 160th Street
New Berlin, WI 53151

Phone: 262-641-8600
Fax: 262-641-8653
Email: waltonstout@waltonstout.com

www.waltonstout.com

VACUUM PRESSURE SYSTEMS



Dual motor/blower systems are available with filters designed specifically for powder or other dusty applications. Vacuum/pressure systems for powder are similar to pellet systems except they are equipped with a filter receiver rather than a cyclone separator. This ensures separation of the material and maximum dust control.



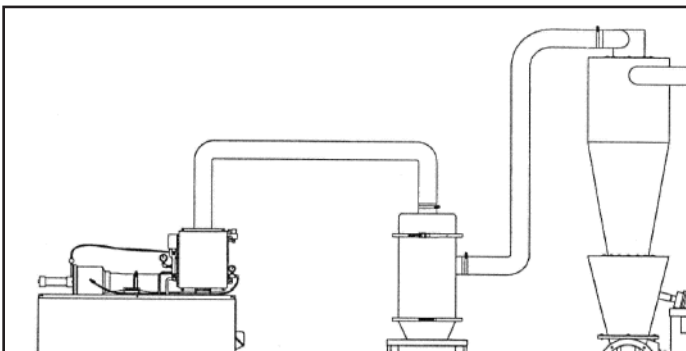
Quick change manifolds assist material distribution. They are used to convey high volumes of powder material long distances from railcars into storage silos.



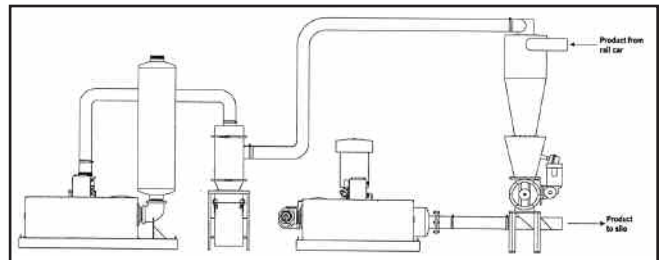
Powder is separated from the vacuum airstream by a filter receiver and metered into the pressure side.



The rotary airlock separates the vacuum and pressure sides of the system.



TYPICAL SINGLE BLOWER SYSTEM



TYPICAL DUAL BLOWER SYSTEM

ACS Group • Walton/Stout is committed to a continuing program of product improvement. Dimensions are subject to change without notice.

© 2009 ACS Group • Walton/Stout

Bulletin WMH3-210

Printed in USA



ACS GROUP • WALTON/STOUT

ACS Group • Walton/Stout
2900 S. 160th Street
New Berlin, WI 53151

Phone: 262-641-8600
Fax: 262-641-8653
Email: waltonstout@waltonstout.com

www.waltonstout.com