

TCO-U SERIES HOT OIL TEMPERATURE CONTROL UNITS



- Simplified internal design delivers efficient heat transfer
- An off-the-shelf, DIN-style, auto-tuning PID fuzzy logic controller accurate to within +/-1°F or °C
- High-flow pumps with 18gpm to 50gpm capacities
- Compact footprint: 24" W x 35" D* x 62" H (610 mm W x 890 mm D* 1575 mm H)

*Increases to 44" (1117 mm) for heaters over 24kW

Precision Heat Transfer For A Wide Range Of Applications

Rugged, Compact And Fully Portable

100°F (40°C) - 550°F (285°C) Operating Range

Single Pass Oil Heating Reduces Operating Noise Level

Rapid response to all your needs for process heating and cooling. That's what ACS Group • Walton/Stout is all about. Our hot oil TCO-U Series high temperature control units are no exception.

Engineered to withstand the rigors of high temperature heat transfer fluid recirculation, the TCO-U Series is designed for a wide range of processing applications from 100°F (40°C) to 550°F (285°C).

Several flow and output options are available to accommodate individual process requirements, including optional heat exchangers for cooling in capacities from 3.9 to 21 sq. ft. (0.4 to 2 sq. m). The "U" type heat exchanger design offers superior heat transfer and is highly resistant to thermal stress when cooling water enters the system. Cleanable and replaceable tube bundles help to minimize maintenance.

The TCO-U Series is designed for easy maintenance and immediate hook-up to process. A rugged cabinet with removable panels provides easy access to all components.

ACS Group • Walton/Stout is committed to a continuing program of product improvement. Dimensions are subject to change without notice.

© 2009 ACS Group • Walton/Stout

Bulletin WHC1-120

Printed in USA

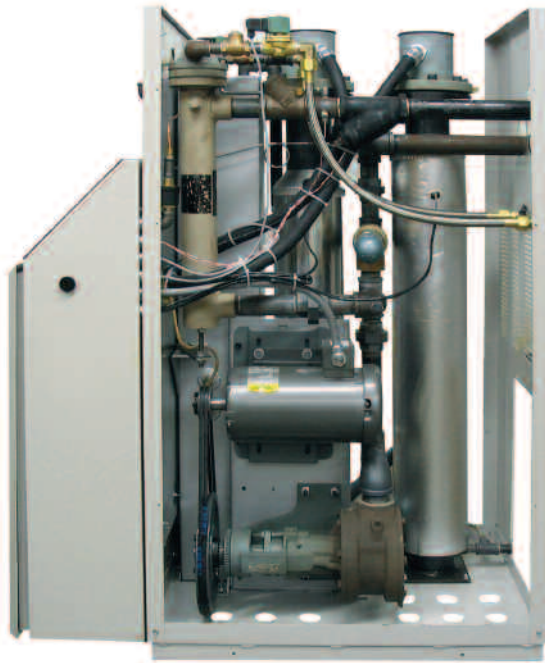
W.S.
ACS GROUP • WALTON/STOUT

ACS Group • Walton/Stout
2900 S. 160th Street
New Berlin, WI 53151

Phone: 262-641-8600
Fax: 262-641-8653
Email: waltonstout@waltonstout.com

www.waltonstout.com

TCO-U SERIES HOT OIL TEMPERATURE CONTROL UNITS



TCO-U SERIES HOT OIL UNITS

- Full 3-year controller warranty
- Removable panels with hand grips for ease of handling
- Easy-to-read to-process pressure gauge
- Positive-seating water supply and drain check valves
- TEFC motor
- Dependable positive displacement gear pump with mechanical seals
- 17 gallon expansion tank with convenient, protected sight glass
- Full-sized water and oil piping connections
- NEMA-2 control enclosure
- Rotary through-the-door disconnect switch
- Automatic venting sequence
- Low level alarm
- Manual bypass

ADVANCED CONTROLLER

- 4 line x 20 character LCD display
- Fuzzy logic for higher accuracy and better repeatability
- 16 segment ramp/soak program
- Setpoint, To Process, From Process and ΔT displays



User-friendly standard control panel features a highly accurate non-proprietary controller with operating status and alarm indicating lights.

ACS Group • Walton/Stout is committed to a continuing program of product improvement. Dimensions are subject to change without notice.

© 2009 ACS Group • Walton/Stout

Bulletin WHC1-120

Printed in USA

WST

ACS GROUP • WALTON/STOUT

ACS Group • Walton/Stout
2900 S. 160th Street
New Berlin, WI 53151

Phone: 262-641-8600
Fax: 262-641-8653
Email: waltonstout@waltonstout.com

www.waltonstout.com