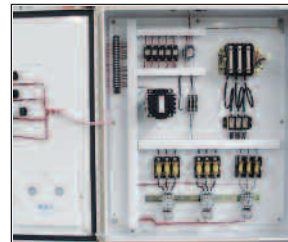


POLYMER PUMP TANKS



FEATURES

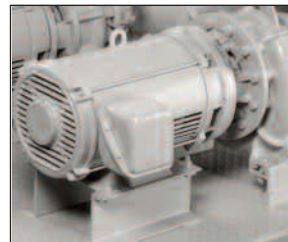
- Centrifugal close-coupled pump, featuring cast iron impellers with 230/ or 460/3/60 ODP motor; other voltages and motor designs are available
- Galvanized pump skid
- Pumps mounted underneath tank
- For C models, tanks come standard with insulation
- Lug-mount butterfly valves
- Automatic level control makeup valve
- White Polyethylene tank construction
- Galvanized tank stand
- Standard hardware includes thermometer(s), pump pressure gauge(s), drain valve
- Full-size pump trim for maximum efficiency; includes valve handles, isolation, throttling, and check valves
- Standard sizes from 500 to 2100 gallon in single and twin tank designs are available



Control options are expertly pre-wired to reduce field labor.



Single or twin models available



Up to 2 pumps per deck. Standby pumps are available to accommodate future expansion



Standard systems from 90 through 400 tons are available with fiberglass towers, polymer towers, or towers with hot dipped galvanized metal casings

ACS Group • Walton/Stout is committed to a continuing program of product improvement. Dimensions are subject to change without notice.

© 2009 ACS Group • Walton/Stout

Bulletin WHC5-140

Printed in USA

WS

ACS GROUP • WALTON/STOUT

ACS Group • Walton/Stout
2900 S. 160th Street
New Berlin, WI 53151

Phone: 262-641-8600
Fax: 262-641-8653
Email: waltonstout@waltonstout.com

www.waltonstout.com

POLYMER PUMP TANKS

Dimensions and Specifications for Single Well Pump Tanks											
Model	Max. Capacity, gallons (liters)			Max. Cooling, tons		Max. Pumps Per Ledge	Dimensions, in. (mm)			Weight, lbs. (kgs)	
	Overflow	Operate-T	Operate-C	Tower-T	Chiller-C		Height	Width	Depth	Shipping	Operating
500	500 (1890)	360 (1360)	420 (1590)	90	175	2	135 (3430)	50 (1270)	50 (1270)	450 (205)	4,615 (2,095)
1100	1100 (4165)	900 (3405)	990 (3750)	206	411		115 (2920)	90 (2285)	90 (2285)	885 (400)	10,050 (4,560)
1500	1550 (5870)	1345 (5090)	1480 (5600)	310	617		130 (3300)	90 (2285)	90 (2285)	920 (415)	13,900 (6,305)
2100	2100 (7950)	1685 (6380)	1850 (7005)	382	771		150 (3810)	90 (2285)	90 (2285)	1,005 (455)	18,500 (8,390)

Dimensions and Specifications for TwinTank Pump Tanks											
Model	Max. Capacity, gallons (liters)			Max. Cooling, tons		Max. Pumps Per Ledge	Dimensions, in. (mm)			Weight, lbs. (kgs)	
	Overflow	Operate-T	Operate-C	Tower-T	Chiller-C		Height	Width	Depth	Shipping	Operating
500D	500 (1890)	360 (1360)	420 (1590)	45	87	2	150 (3810)	110 (2795)	50 (1270)	850 (385)	5,010 (2,270)
1100D	1000 (3785)	900 (3405)	990 (3750)	103	206		135 (3430)	200 (5080)	90 (2285)	900 (410)	9,250 (4,195)
1500D	1500 (5680)	1345 (5090)	1480 (5600)	155	309		135 (3430)	200 (5080)	90 (2285)	1,000 (455)	13,500 (6,125)
2100D	2200 (8320)	1685 (6380)	1850 (7005)	191	386		135 (3430)	200 (5080)	90 (2285)	1,770 (800)	20,100 (9,120)

ACS Group • Walton/Stout is committed to a continuing program of product improvement. Dimensions are subject to change without notice.

© 2009 ACS Group • Walton/Stout Bulletin WHC5-140 Printed in USA



ACS Group • Walton/Stout
2900 S. 160th Street
New Berlin, WI 53151

Phone: 262-641-8600
Fax: 262-641-8653
Email: waltonstout@waltonstout.com

www.waltonstout.com