

TCU SERIES OPTICAL DISK UNIT



STANDARD FEATURES

- Four or six zone configurations
- Operating range: 0°F to 250°F (-18°C to 121°C)
- Moving and stationary mold half zones
- Sprue and punch zones
- Process pumps available in .67 hp or 1.5 hp
- 3kW heater
- 1/4" x 9/32" orifice cooling valve
- Air purge
- Manual bypass
- 3/4" female NPT To and From Process connections; 1-1/2" female NPT common Cooling Water In and Cooling Water Out connections, terminated in ball valves
- 1/8" male NPT common air purge connection
- Liquid filled "To Process" and "Water Supply" pressure gauges
- 1/16th DIN controllers with separate 24-hour timer
- NEMA 12 electrical enclosure
- Rotary through-the-door disconnect switch
- Each zone individually wired and plumbed so that entire zone can be removed/replaced as a single piece

ACS Group • Walton/Stout is committed to a continuing program of product improvement. Dimensions are subject to change without notice.

© 2009 ACS Group • Walton/Stout

Bulletin WHC1-115

Printed in USA

WS
ACS GROUP • WALTON/STOUT

ACS Group • Walton/Stout
2900 S. 160th Street
New Berlin, WI 53151

Phone: 262-641-8600
Fax: 262-641-8653
Email: waltonstout@waltonstout.com

www.waltonstout.com

TCU SERIES OPTICAL DISK UNIT



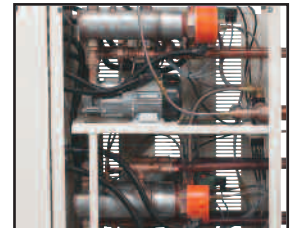
1/16th DIN controllers come with separate 24-hour timer.



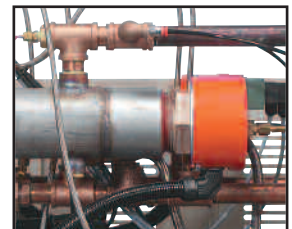
To meet strict clean room specifications, the optional magnetically coupled pumps require no seal changes.



The top two zones are Sprue and Punch zones. The bottom two zones are moving and stationary halves. A second set of Sprue and Punch zones is added for DVD molding.



3 kW heater and 1/4" x 9/32" cooling valve establish and maintain precise, uniform temperatures.



ACS Group • Walton/Stout is committed to a continuing program of product improvement. Dimensions are subject to change without notice.

© 2009 ACS Group • Walton/Stout

Bulletin WHC1-115

Printed in USA

WST

ACS GROUP • WALTON/STOUT

ACS Group • Walton/Stout
2900 S. 160th Street
New Berlin, WI 53151

Phone: 262-641-8600
Fax: 262-641-8653
Email: waltonstout@waltonstout.com

www.waltonstout.com