

AC AND ACM COMPRESSED AIR DRYERS



**ACM30/3.0 Machine
Mount Dryer with Hopper**



ACM30F Floor Model Dryer

STANDARD FEATURES

- Standard temperature range: 110°F to 300°F (45°C to 150°C)
High temperature range: 110°F to 400°F (45°C to 205°C)
- Compact size with full size performance
- Easy-to-use off-the-shelf microprocessor control provides digital temperature control up to 300°F (400°F (205°C) high temperature option available)
- Control system complies with NFPA79, UL and CUL for maximum safety, including electrical disconnect and branch fusing
- Standard model (AC Series, no membrane unit) reduces dew point of compressed air supply by 50°F (10°C)
- Membrane option (ACM Series) maintains -40°F (-40°C) dewpoint in all environments
- Cabinet style design for maximum safety
- Instant -40°F (-40°C) dewpoint with ACM dryers
- No temperature spikes, no regeneration or process blowers, no desiccant, no regeneration heaters, no moving parts
- Stainless steel heater boxes
- High-efficiency 0.01 micron filter assembly (no contamination, can be mounted inside clean room)
- Safety switch and alarm to monitor air supply
- 30 and 60 CFM models available (50 and 100 m³/hr)
- Premium quality Incoloy® low watt density heaters for dependable service
- CE models available
- 460/3/60 supply voltage—others available

ACS Group • Walton/Stout is committed to a continuing program of product improvement. Dimensions are subject to change without notice.

© 2009 ACS Group • Walton/Stout

Bulletin WMH1-150

Printed in USA

W/S

ACS GROUP • WALTON/STOUT

ACS Group • Walton/Stout
2900 S. 160th Street
New Berlin, WI 53151

Phone: 262-641-8600
Fax: 262-641-8653
Email: waltonstout@waltonstout.com

www.waltonstout.com

AC AND ACM COMPRESSED AIR DRYERS



The dryer is available mounted on a portable cart for additional convenience.

OPTIONS

- Casters
- High temperature (400°F (205°C)) package
- Dew point monitor
- CE models available
- Portable cart

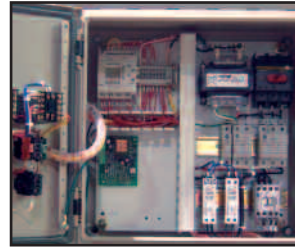
MACHINE MOUNT MODELS INCLUDE

- 1.7, 3.0, 4.0 or 6.0 cu. ft. (50, 85, 110, or 170 liter) stainless steel drying hopper
- Machine mount adapter with drain
- Interconnecting hose and clamps

FLOOR MOUNT MODELS INCLUDE

- 12' high-temperature silicone hose and clamps for process air
- Rubber feet

ADDITIONAL FEATURES



All AC and ACM control systems include an electrical disconnect and branch fusing for maximum safety.



The microprocessor controller features digital temperature control.

STANDARD CONTROLLER FEATURES

- Off-the-shelf 1/16 DIN temperature controller
- Programmable relay (PRC) based control system
- Enclosure meets NFPA 79, UL and CUL electrical standards
- Non-fused disconnect
- High process temperature alarm light

OPTIONAL CONTROLLER FEATURES

- Audible alarm with silence button
- Digital dewpoint monitor -40°F (-40°C)

W S
ACS GROUP • WALTON/STOUT

ACS Group • Walton/Stout is committed to a continuing program of product improvement. Dimensions are subject to change without notice.

© 2009 ACS Group • Walton/Stout Bulletin WMH1-150 Printed in USA

ACS Group • Walton/Stout
2900 S. 160th Street
New Berlin, WI 53151

Phone: 262-641-8600
Fax: 262-641-8653
Email: waltonstout@waltonstout.com

www.waltonstout.com