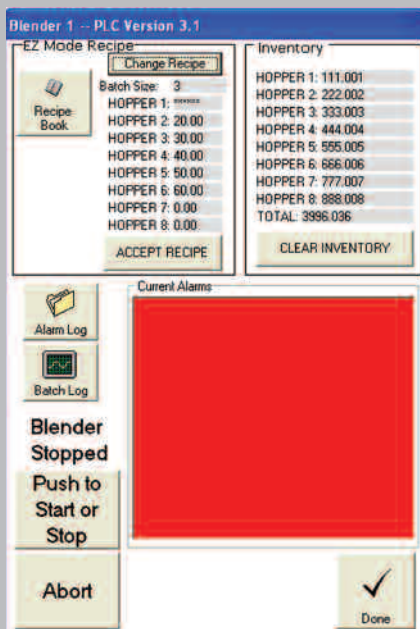


A3 BLENDER CONTROL SOFTWARE



A3 Virtual Control Panel

A3 BLENDER CONTROL AND DATA ACQUISITION SOFTWARE

A3 Control and Data Acquisition systems are compatible with Allen-Bradley and existing ACS • Walton/Stout control systems when equipped with the proper communication option.

- Notes: 1. All existing blenders with HydReclaim controls can be included as long as they are upgraded to Version 7.01 software for A3 to work properly. (May require a service call or panel upgrade.)
2. Communication modules and cables are not included – purchase separately.

STANDARD FEATURES

- Compatible with MS Windows XP Home and Professional Edition
- Monitor up to 1000 A-B controlled blenders, 1000 Mitsubishi controlled blenders, 1000 Maguire WSB controlled blenders, or 255 HydReclaim controlled blenders
- Start and stop blenders and feeders
- Monitor and control recipes for each blender
- Log up to 1000 alarms per blender
- Log up to 5000 consecutive batch weights
- Monitor and record all recipe changes
- Monitor material inventory, even if cleared at the blender
- Compatible with MS Works or Office 2000, including Access, Excel and Word
- Central System Inventory and Silo Management ability
- Download inventory run rates, run status, target vs. actual recipe set points
- Store an infinite number of recipes (limited only by hard drive space on computer)
- Upload and download recipes and access recipe storage book functions
- Automatically generate time/date stamped reports on an hourly basis
- Two tier password security
- Job Report Manager that tracks material reference numbers as well as lot numbers and silo numbers

OPTIONAL FEATURES

- Software kit A-B or HydReclaim and Mitsubishi controlled blenders
- Ethernet Module for A-B, Mitsubishi, or Maguire blender (one per blender)
- USB RS422 Legacy Module for HydReclaim blender (one per network)

Note:

Legacy HydReclaim blenders will not communicate target vs. actual data due to a limitation of their software protocol. Maguire WSB controlled blenders will not communicate target vs. actual data and A3 cannot control the recipe in the blender due to a limitation of their software protocol.

ACS Group • Walton/Stout is committed to a continuing program of product improvement. Dimensions are subject to change without notice.

© 2009 ACS Group • Walton/Stout

Bulletin WB1-150

Printed in USA

W S
ACS GROUP • WALTON/STOUT

ACS Group • Walton/Stout
2900 S. 160th Street
New Berlin, WI 53151

Phone: 262-641-8600
Fax: 262-641-8653
Email: waltonstout@waltonstout.com

www.waltonstout.com

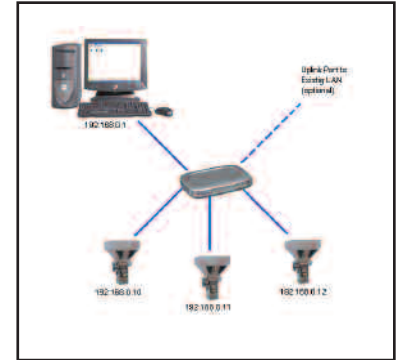
A3 BLENDER CONTROL SOFTWARE

PC SYSTEM REQUIREMENTS

- Pentium® II 750 Mhz minimum processor speed (Pentium 4 recommended)
- Windows® XP operating system (service pack 1 installed)
- Internet Explorer 6.0
- 30 GB minimum hard drive space (60 GB recommended)
- 128 MB minimum RAM (512 MB DDR Ram recommended)
- CD-ROM drive (CD-RW recommended)
- Video card capable of 1024x768x16 bit color (32 bit color recommended)
- 10 Mbps Ethernet (100 Mbps recommended)
- 1 USB slot (Required for optional RS-422 Legacy module needed for
- Standard Ink Jet Printer (if you are going to print the reports) HydReclaim blender controls only)

REQUIREMENTS FOR BD BLENDERS WITH ALLEN-BRADLEY CONTROLS

- Each blender must have version 3.2 or newer software
- Each blender must have the optional Ethernet module installed
- Ethernet Module ACS • Walton/Stout Part # A0563939 A-B # 1761-NET-ENI
- Module Cable ACS • Walton/Stout Part # A0565898 A-B # 1761-CBL-AM00
- All blenders and the host PC must be on the same Ethernet network, which is installed by the customer using CAT 5 cable. If the blenders are on a stand-alone network, and not part of an existing network, the customer will also need to supply a hub or switch. The network installation should be done by the customer's IT department or a professional. ACS • Walton/Stout does not provide installation services for the Ethernet network. Refer to the A3 manual for further details.



Typical A3 Network Installation
(Computer, cables and optional hub supplied by customer)

REQUIREMENTS FOR OS/OA/OL/OFC/OI UNITS WITH OLDER PROPRIETARY HYDRECLAIM CONTROLS

- Each OS/OA blender, or OI inventory unit, with LGX controls must have software version 7.01 or newer
- Each OFC/OFE unit with LSTAR controls must have software version 5.5A or newer
- Each OL blender with LSTAR controls must have version 10.5A or newer
- The customer must purchase the "USB RS422 Legacy Module" for the PC (only one module required for entire system).
- The customer must run Belden 8103 2-twisted pair cables from the PC to the first blender, then from the first blender to the second, and so on. At each blender the customer must solder DB9 Male connectors to the cables and a DB9 Female connector at the PC cable. This cable must be run in separate conduit to isolate from electrical noise and static in the facility. Refer to the A3 manual for further details.

REQUIREMENTS FOR BLENDERS WITH MAGUIRE WSB CONTROLS

- Each blender must have the Ethernet module and cable installed
- Ethernet Module ACS • Walton/Stout Part # 724.00872.00 (Digi One SP)
- Ethernet Module Wall Mount ACS • Walton/Stout Part # 724.00873.00 (Digi One SP Wall Mount Bracket)
- Module Cable ACS • Walton/Stout Part # A0565856 (10' DB9F-DB9F straight through cable)
- Each blender must have version 80609A (4/14/1998) or newer software. Consult Maguire for software upgrades.
- All blenders and the host PC must be on the same Ethernet network, which is installed by the customer using CAT 5 cable. If the blenders are on a stand-alone network, and not part of an existing network, the customer will also need to supply a hub or switch. The network installation should be done by the customer's IT department or a professional. ACS • Walton/Stout does not provide installation services for the Ethernet network. Refer to the A3 manual for further details.

REQUIREMENTS FOR BLENDERS (SGB OR SGBD) WITH MITSUBISHI CONTROLS

- Each blender must have the optional Ethernet module installed
- Ethernet Module
- Module Cable
- Each blender must have correct software version. Consult Factory.
- All blenders and the host PC must be on the same Ethernet network, which is installed by the customer using CAT 5 cable. If the blenders are on a stand-alone network, and not part of an existing network, the customer will also need to supply a hub or switch. The network installation should be done by the customer's IT department or a professional. ACS • Walton/Stout does not provide installation services for the Ethernet network. Refer to the A3 manual for further details.

ACS Group • Walton/Stout is committed to a continuing program of product improvement. Dimensions are subject to change without notice.

© 2009 ACS Group • Walton/Stout Bulletin WB1-150 Printed in USA



ACS Group • Walton/Stout
2900 S. 160th Street
New Berlin, WI 53151

Phone: 262-641-8600
Fax: 262-641-8653
Email: waltonstout@waltonstout.com

www.waltonstout.com