

# VTC 24/128 & 10/80 DISTRIBUTED I/O CONVEYING CONTROLS



## VTC 10/80 AND 24/128 CONTROL SYSTEMS

Vacuum conveying has never been more simple or versatile than with ACS Group • Walton/Stout's 10/80 and 24/128 Controller. The 10/80 controller from ACS Group • Walton/Stout features enhanced graphics and control of up to 10 vacuum conveying pumps, 80 loading stations, and 80 purge valves. The Vactrac 24/128 controller from ACS Group • Walton/Stout features enhanced graphics and control of up to 24 vacuum conveying pumps, 128 loading stations and 128 purge valves. The 10/80 and 24/128 controllers utilize a DeviceNet distributed I/O network, and standard features include an Allen-Bradley CompactLogix controller with a 10" color touch-screen operator interface.



## ONE TOUCH. TWO CABLES. TOTAL CONTROL.

The ArmorBlock distributed I/O modules and Kwik-Link flat wiring are compatible with DeviceNet communications. The network approach reduces installation costs by minimizing wire runs, and allows for easy expansion and "hot-swapping" of components, eliminating costly downtime.

## STANDARD FEATURES

- Time fill loading
- Prioritized station loading
- Manifold line sharing
- Built-in system diagnostics
- Add new equipment and/or equipment options without shutting down the system
- Optimized for blender applications
- 1 optional I/O per hopper (24/128)
- Up to 3 optional I/O per hopper (10/80)

## OPTIONAL FEATURES

- Additional touch-screen operator interfaces for multi-location access within the plant
- Multiple vacuum pump and filter cleaning options
- Line purging capability
- Closed loop conveying
- Local station On/Off control
- Centralized remote proportioning valve control
- Blowback filter cleaning at the loading station
- Vacuum receiver positive discharge
- Volume-fill of vacuum receiver
- Low-level indication in supply hoppers
- Local and/or centralized alarms
- Ethernet capabilities
- Supply power noise filter surge/suppressor
- Granulator unloading

ACS Group • Walton/Stout is committed to a continuing program of product improvement. Dimensions are subject to change without notice.

© 2009 ACS Group • Walton/Stout

Bulletin WMH2-120

Printed in USA

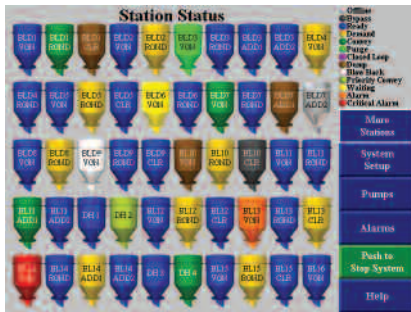
**WS**  
ACS GROUP • WALTON/STOUT

ACS Group • Walton/Stout  
2900 S. 160th Street  
New Berlin, WI 53151

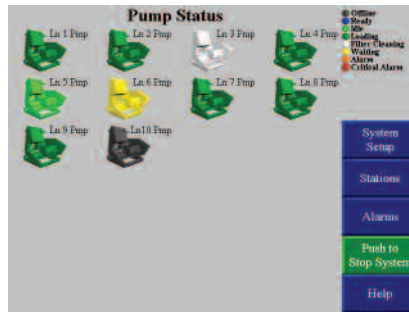
Phone: 262-641-8600  
Fax: 262-641-8653  
Email: [waltonstout@waltonstout.com](mailto:waltonstout@waltonstout.com)

[www.waltonstout.com](http://www.waltonstout.com)

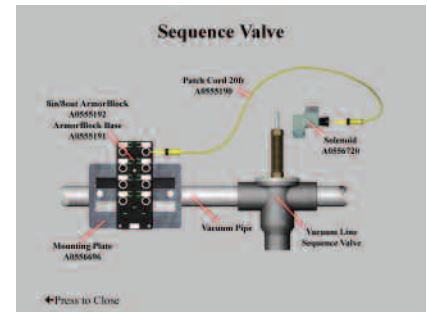
# VTC 24/128 & 10/80 DISTRIBUTED I/O CONVEYING CONTROLS



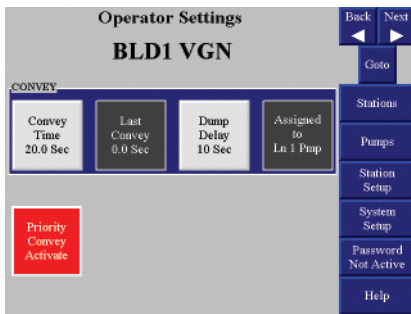
Naming of loading stations, pumps, purge valves and material sources



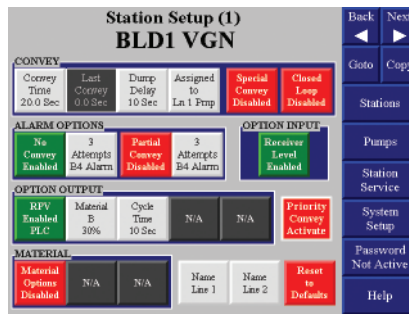
Pump Status



Built-in diagnostics, operating instructions and installation instructions



Operator Screen



Set-up Screen



Spare Parts Screen

The sample VTC10/80 and 24/128 screens above show how versatile this control platform is. Easy to follow graphical touch-screens provide total navigational control of this central vacuum system.

ACS Group • Walton/Stout is committed to a continuing program of product improvement. Dimensions are subject to change without notice.

© 2009 ACS Group • Walton/Stout Bulletin WMH2-120 Printed in USA



ACS GROUP • WALTON/STOUT

ACS Group • Walton/Stout  
2900 S. 160th Street  
New Berlin, WI 53151

Phone: 262-641-8600  
Fax: 262-641-8653  
Email: waltonstout@waltonstout.com

www.waltonstout.com